



Kimble Recycling & Disposal, Inc.
P.O. Box 448
Dover, OH 44622
Phone: (800) 201-0005
Fax: (330) 343-0411
www.kimblecompanies.com

Village of Bentleyville

December 14, 2020

Resident
6253 Chagrin River Rd
Bentleyville, OH 44022-3337

**RE: IMPORTANT NOTICE ON
REFUSE/RECYCLING SERVICE**

Dear Bentleyville Resident,

Following a competitive bid process, the Village of Bentleyville awarded an exclusive contract, effective **January 1, 2021**, for all residential refuse and recycling collection to Kimble Recycling & Disposal, Inc. (Kimble). Kimble is a local family owned business with 68 years of experience in the refuse industry. (*Learn more about Kimble at kimblecompanies.com*).

In addition to a reputation for excellent service, Kimble will utilize trucks powered by natural gas which operate more quietly and efficiently. Natural Gas is a cleaner burning fuel (less emissions) which improves the environment of the Village's neighborhoods. The natural gas is also generated here in Eastern Ohio, which helps the local economy and reduces dependency on foreign oil.

Please take time to read this information carefully, as it may answer many of the questions you may have regarding how to participate in the collection program provided by Kimble. Though it's our intention to maintain the current service day of Monday, the time of service on your collection day may be different than in the past. Please have all your materials at the curb for collection by 7:00 A.M. on your collection day. If you do not have your carts or bags placed out timely for collection, you will have to wait until your next regularly scheduled pick up day for collection.

**EFFECTIVE JANUARY 1, 2021 YOUR REGULAR
COLLECTION DAY REMAINS
MONDAY**

Your first refuse and recycle collection day will be January 4, 2021.

DELIVERY AND USE OF THE KIMBLE CARTS

Beginning the week of December 28, 2020, Kimble will start delivering to each residence, a 96- gallon (dark green) cart to contain your refuse and a 65-gallon (bright green) cart to contain your recyclable materials. Delivery of these carts to each residence will take some time but should be completed before your first collection day.

DO NOT UTILIZE YOUR KIMBLE CARTS UNTIL AFTER YOUR LAST SERVICE DAY IN DECEMBER. WASTE MANAGEMENT WASTE SERVICES WILL NOT SERVICE KIMBLE CARTS.

PLEASE LEAVE YOUR EMPTY WASTE MANAGEMENT CARTS AT THE CURB FOLLOWING WASTE MANAGERMENTS FINAL COLLECTION IN DECEMBER. WASTE MANAGEMENT WILL RETRIEVE THEIR CARTS SOMETIME AFTER THEIR LAST SERVICE DAY.

If you do not receive your carts by the morning of your first collection day, please contact Customer Service by phone at 1-800-201-0005, live chat on our website at www.kimblecompanies.com or email at customerservice@kimblecompanies.com.

Extra Carts - Extra refuse and recycling carts are available for customers for an additional cost of \$3.85 per cart, per month. Customers requesting additional carts after the initial deliveries will be charged a \$15.00 delivery fee per delivery trip. All fees for extra carts will be billed by Kimble annually, on a calendar year basis. The initial year's cart fees are required to be paid prior to delivery.

The Kimble refuse and recycle carts are provided for your use at the above listed address. **If you move from this address the carts are to remain at the property for the use by the next occupant.**

To use the carts, simply place your household refuse into the dark green Kimble supplied refuse cart and place your loose (no need to bag) recyclable materials into the bright green Kimble supplied recycle cart. On your collection day, pull both your refuse and recycle carts within 2-3 feet of the street with the lid openings facing the street. The carts should be at least 3 feet from one another and other objects such as parked cars, mailboxes, trees, other refuse bags, or bulky refuse items. Though refuse services are provided weekly and recycle services every other week, it is only necessary to place your carts to the curb when they are full.

KEY COMPONENTS OF THE REFUSE PROGRAM

Regular Full Service with 96 Gallon Refuse Cart – The weekly refuse service which includes the contents of your dark green 96-gallon refuse cart, excess bagged or bundled refuse, yard waste, and bulky items. You will also receive one (1) 64- gallon Kimble recycling cart for the every other week recyclable materials collection. The excess bagged refuse and yard waste should be in 30-gallon bags and have enough strength to maintain their integrity when lifted from the top. Bagged or bundled refuse and yard waste not exceeding 4 feet in length should not weigh more than 50 pounds per bag or bundle. Cardboard boxes, 55-gallon drums, or barrels cannot be used as waste receptacles. Personal containers, 30 gallon or less, may be set out for manual collection. Kimble, nor the Village, are responsible for any damages caused to personal containers that are larger than 30 gallons in size, which require Kimble drivers to use the automated collection arm to empty the container.

- **Bulk Item Collection** – Included in the Regular Full Service you may set out bulk items weekly, on any regularly scheduled collection day.
 - Bulk items include stoves, appliances, hot water heaters (water removed), washers, dryers, furniture, chairs and carpet (4 feet in length).
 - Appliances containing freon are not collected. However, these items that have had the freon removed and the unit tagged by a qualified technician can be set out as a bulk item.
 - All mattresses, box springs and upholstered furniture infested with bed bugs **MUST** be wrapped and sealed in plastic.
 - Christmas trees need to be 4 feet or less in length to be collected.
 - Please keep bulk items three feet away from your carts.

- **Construction & Demolition Debris (C&D)** – If remodeling and repair work is performed by the resident, small amounts of C&D will be collected weekly. Individual items shall not weigh more than 50 lbs. Contractors performing remodeling and repair work are responsible for the removal of debris and the C&D materials. These items set out for collection will not be collected.

KEY COMPONENTS OF THE RECYCLE PROGRAM

64-gallon Recycle Cart – The Regular Full Service includes the every other week collection of your 64-gallon recycle cart, with the first collection being January 4th. (Refer to the enclosed flyer for the 2021 recycle collection schedule.) Cardboard, steel cans, aluminum cans, newspapers, office paper, junk mail, glass bottles, and plastic bottles (see Plastics Recycled below) can all be placed in the recycle cart. Recycle service will occur on the same day as refuse collection. Please do not use your recycle cart for refuse. Recycle carts containing refuse or recyclable items that are contaminated with food, liquids or other non- recyclable materials will not be emptied and will be tagged to notify the resident of improper use. Contaminating the recycle cart can damage other recyclables during the sorting process. As a result, we ask you to be conservative in your decision to recycle. When in doubt throw it out!

Plastics Recycled - Most plastic products are labeled on the bottom with a recycle symbol consisting of arrows that cycle clockwise to form a rounded triangle and enclosing the number 1 or 2. Any clean and empty plastic bottles or jugs labeled in this fashion can be included for recycling. **Plastic items not acceptable include plastic bags, shrink wrap, Styrofoam, toys, motor oil and antifreeze containers.** There is a tremendous amount of material which can be diverted from your refuse cart to your 64-gallon recycle cart. Recycling a ton of plastic saves the energy equivalent of 1,500 gallons of gasoline!

Single Stream Recycling – Do not bag or bundle your newspapers, cardboard, or any other materials separately. The bags and materials used to bundle your recyclables can become entangled in the recycling sorting equipment causing damage. They may also contaminate the contained recycling materials making them unrecoverable. All recyclable materials can be mixed together in the recycle cart as a “single stream” of recyclable material. The individual components of the mixed recyclables or “single stream” will be segregated and prepared for market at Kimble’s automated recycle facility. See the enclosed list of all the items which can be placed in the recycle cart to be recovered and returned to markets.

SLOW DOWN TO GET AROUND

If you are driving behind one of our collection vehicles, we ask for your patience and please remember that Ohio law requires you to slow down before passing any refuse hauling vehicle. The safety of our employees and the general public are a top priority for Kimble.

REFUSE AND RECYCLING COLLECTION GUIDELINES

Consistent with previous services, the weekly collection DOES NOT include tires, batteries, automotive/truck parts, paint, oil, fluorescent bulbs, gas cans, propane tanks,

hazardous/infectious waste, flammable liquids, and any waste prohibited from disposal in a municipal solid waste landfill. Call the Cuyahoga County Solid Waste District for information on disposal of these items at 216-443-3749.

From time to time you may place items on the curb that Kimble cannot accept because they do not comply with these guidelines. Our drivers will place a tag on the item explaining why it cannot be collected.

Kimble does not operate on the following Holidays: New Year's Day, Memorial Day, July 4th, Labor Day, Thanksgiving Day, and Christmas Day. If a Holiday falls on a Monday, service for that day will be delayed by one day. If a holiday falls on a Tuesday thru Sunday, your collection day will not be delayed (collection day will remain on Monday).

If you should have any further questions regarding service, please contact Customer Service by phone at 1-800-201-0005, live chat on the website at www.kimblecompanies.com or email at customerservice@kimblecompanies.com.

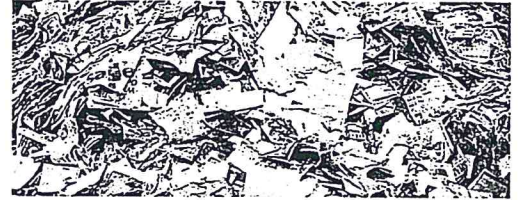
Finally, please review the enclosed "Instruction for Cart Placement" and "Easy Recycle Guides". Kimble Recycling & Disposal, Inc. is pleased to add the Village of Bentleyville residents to our family of customers.

Sincerely,

Your Kimble Service Team

PAPER & NEWSPAPER

Paper should be clean and dry. Please no glossy paper or foil wrapping paper. Paper should not be stained by waste. Magazines, mail, newspapers and copier paper are accepted.



CARDBOARD

Cardboard must be clean and dry. It should be flattened and be emptied of any packing materials. No food contamination such as grease on pizza boxes.



METAL AND ALUMINUM CANS

Only metal or aluminum food and drink cans are accepted. They should be empty, clean and dry before being placed loosely in the recycling cart. No other metal items are accepted.



GLASS BOTTLES

All glass bottles should be empty, clean and dry before being placed loosely in the recycling cart. Please no glassware, mirrors, window panes or light bulbs.



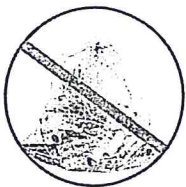
PLASTICS JUGS & BOTTLES

Only clean and empty plastic bottles and jugs are accepted. Please do not crush the bottles and keep lids on. No other plastic items are accepted - even if they have a recycle logo.



NOT ACCEPTED

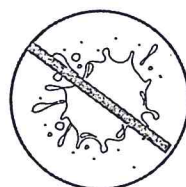
- WOOD
- PAINT CANS
- ANTI-FREEZE
- WAX CARTONS
- BATTERIES
- LIGHT BULBS
- MOTOR OIL CONTAINERS
- HOSES
- WIRE HANGERS
- PLASTIC BAGS
- STYROFOAM
- CHRISTMAS LIGHTS
- TOYS
- PLASTIC UTENSILS
- PLASTIC FURNITURE
- YARD WASTE



NO
PLASTIC BAGS



NO
GARBAGE



NO
FOOD OR LIQUIDS



NO
CLOTHING



NO
HOSES/WIRES/CHAINS

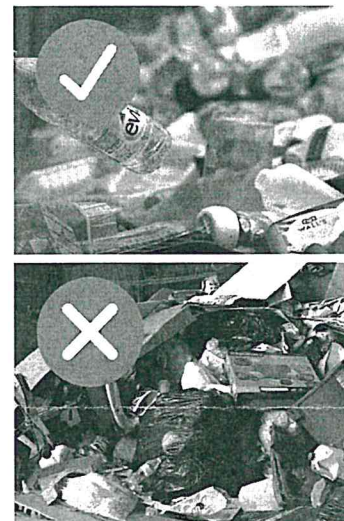


NO
ELECTRONICS

Since 1994, Kimble Recycling & Disposal, Inc. has provided convenient recycling service to our Eastern Ohio customers. Take a minute to learn about our easy recycling program and what we recycle.

The biggest issue with curbside recycling for all recycling haulers is the large amount of contaminates received within the recycling carts (see pictured). Items such as trash bags, food residue, styrofoam, batteries, electronics, etc. are among the top contaminates and are not accepted at our recycling center.

If your item is not on the approved list please place it directly into the trash. All items should be cleaned and dried before being placed into the cart - unbagged. Together, we can help protect the environment and build a more sustainable future.



RECYCLING RIGHT - In 3 Easy Steps...

1 When in doubt... THROW IT OUT!

Make sure that all items are on the Kimble Recycling Center's approved list of accepted recyclables. If the item is not on the list or if you are unsure place it directly into the trash.

2 Recyclables must be clean and dry.

Food is considered a contaminate. No dirty peanut butter jars or bottles with water still in them. Cardboard must also be clean and dry. Greasy pizza boxes are not recyclable.

3 No need to sort or bag your items

Place your approved recyclables in your Kimble Recycling Cart all together. Items should be loose and unbagged. Bags are a contaminate at our Recycling Center.

VILLAGE OF BENTLEYVILLE RECYCLING COLLECTION CALENDAR

S	M	T	W	R	F	S
JANUARY 2021						
					1	2
3	4	5	6	7	8	9
10	11	12	13	14	15	16
17	18	19	20	21	22	23
24	25	26	27	28	29	30
31						

S	M	T	W	R	F	S
FEBRUARY 2021						
1	2	3	4	5	6	
7	8	9	10	11	12	13
14	15	16	17	18	19	20
21	22	23	24	25	26	27
28						

S	M	T	W	R	F	S
MARCH 2021						
1	2	3	4	5	6	
7	8	9	10	11	12	13
14	15	16	17	18	19	20
21	22	23	24	25	26	27
28	29	30	31			

S	M	T	W	R	F	S
APRIL 2021						
				1	2	3
4	5	6	7	8	9	10
11	12	13	14	15	16	17
18	19	20	21	22	23	24
25	26	27	28	29	30	

S	M	T	W	R	F	S
MAY 2021						
						1
2	3	4	5	6	7	8
9	10	11	12	13	14	15
16	17	18	19	20	21	22
23	24	25	26	27	28	29
30	31					

S	M	T	W	R	F	S
JUNE 2021						
						1
2	3	4	5	6	7	8
9	10	11	12	13	14	15
16	17	18	19	20	21	22
23	24	25	26	27	28	29
30	31					

S	M	T	W	R	F	S
JULY 2021						
						1
2	3	4	5	6	7	8
9	10	11	12	13	14	15
16	17	18	19	20	21	22
23	24	25	26	27	28	29
30	31					

S	M	T	W	R	F	S
AUGUST 2021						
1	2	3	4	5	6	7
8	9	10	11	12	13	14
15	16	17	18	19	20	21
22	23	24	25	26	27	28
29	30	31				

S	M	T	W	R	F	S
SEPTEMBER 2021						
						1
2	3	4	5	6	7	8
9	10	11	12	13	14	15
16	17	18	19	20	21	22
23	24	25	26	27	28	29
30	31					

S	M	T	W	R	F	S
OCTOBER 2021						
						1
2	3	4	5	6	7	8
9	10	11	12	13	14	15
16	17	18	19	20	21	22
23	24	25	26	27	28	29
30	31					

S	M	T	W	R	F	S
NOVEMBER 2021						
						1
2	3	4	5	6	7	8
9	10	11	12	13	14	15
16	17	18	19	20	21	22
23	24	25	26	27	28	29
30	31					

S	M	T	W	R	F	S
DECEMBER 2021						
						1
2	3	4	5	6	7	8
9	10	11	12	13	14	15
16	17	18	19	20	21	22
23	24	25	26	27	28	29
30	31					

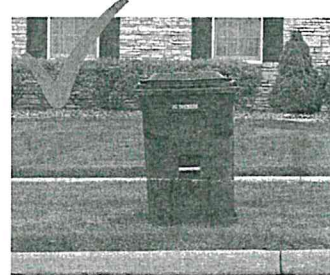
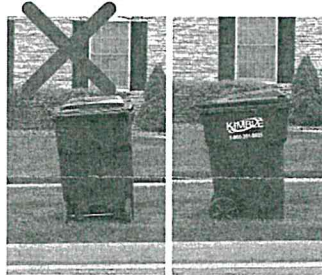
PLEASE DO NOT BLOCK

With the automated collection trucks we need some room to reach the cart. Please do not park vehicles in front of the cart on collection day.



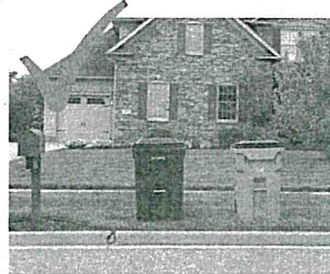
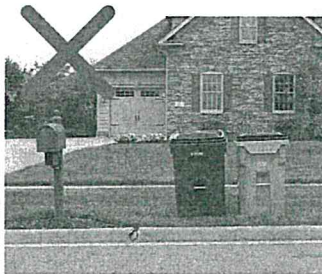
CART SHOULD OPEN TOWARDS THE STREET

Cart should not be placed at the curb sideways or backwards. The lid should open towards the street.

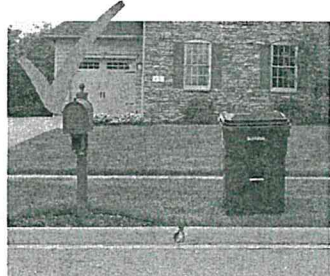
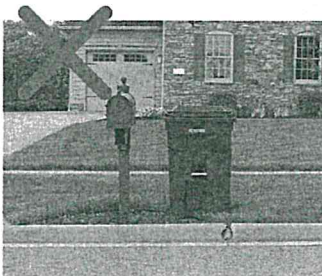


PLACEMENT OF CART

Each cart should have nothing sitting nearby... Mailboxes, telephone poles, trees, additional carts, etc. must be a minimum of 2-3 feet from the cart.



The best placement for a cart is at the end of the driveway or on the grass within 2-3 feet of the road.



LOADING YOUR CART

TRASH - Place items into trash bags to keep your trash cart clean.

RECYCLING - Place approved items in your recycling cart loosely (no bags). Breakdown boxes to save room.